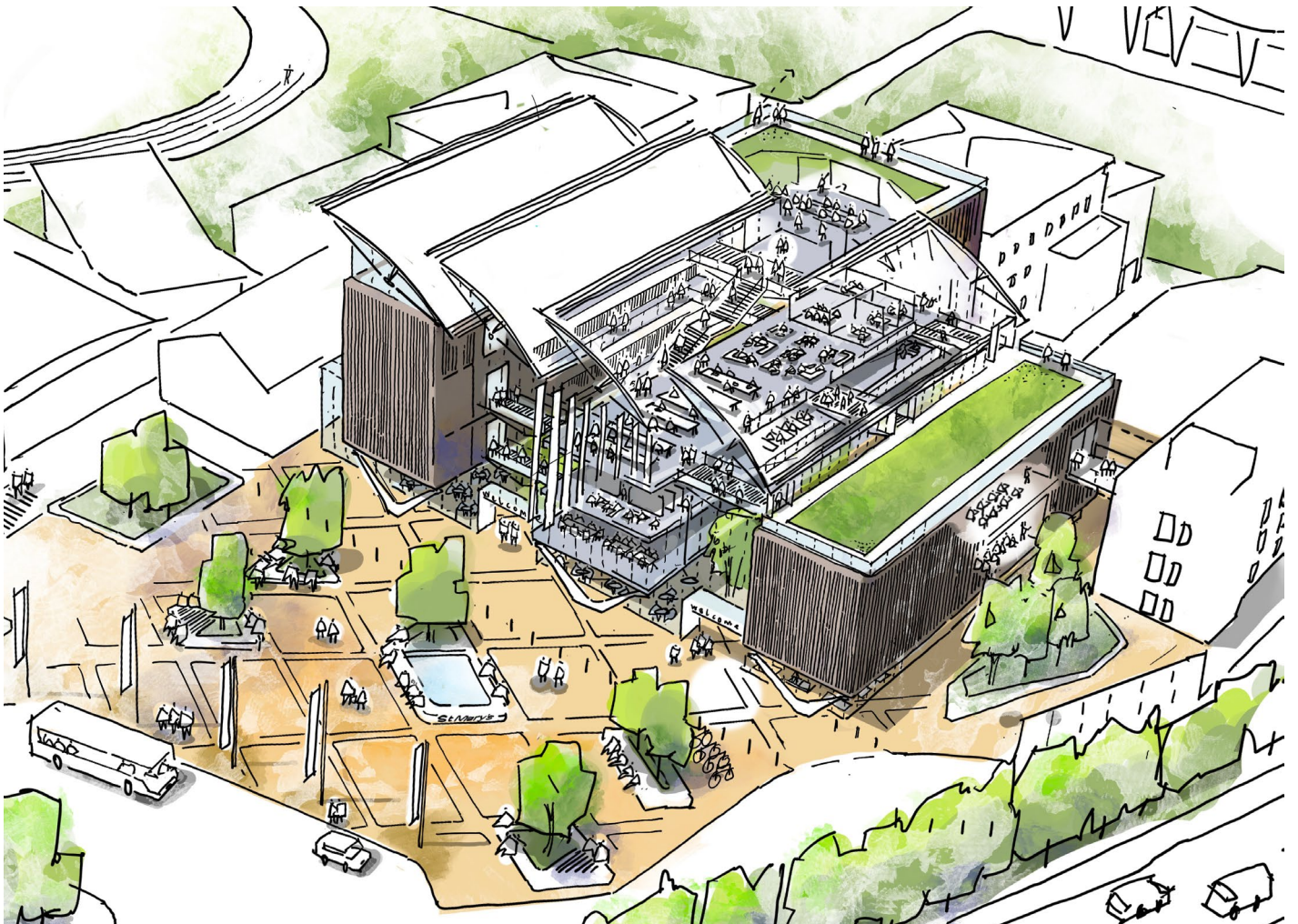


CREATING ENVIRONMENTS THAT ENHANCE PEOPLE'S LIVES

SUSTAINABILITY POLICY





Blackfriars Station | Blackfriars station has quickly established itself as a modern London landmark
Natural Light Awards RIBA Awards 2014, London Sustainability Award, Finalist CEEQUAL Outstanding
Achievement Awards 2013, Energy & Carbon Category, Winner


CONTENTS

Introduction	05
The Policy	07
Project Process	09
Behaviour	09
Target Setting, Monitoring & Recording	09
Research, Innovation & Training	10
Environmental Standards & Quality Control	13
United Nations Sustainable Development Goals (SDGs)	14

About this Document

In preparing this document we have taken all care to ensure there are no errors or discrepancies in the information contained.

In the event that errors are found, or the document is not up to the standard you expect from us, or you require additional copies; please contact the author, or forward details to Pascall+Watson architects at the address on the [back cover](#).



Climate change is the defining challenge of the 21st century, demanding urgent action and leadership by architects and the wider construction industry.

Pascall+Watson is committed to achieving Net Zero emissions by 2040.

How the built environment is designed, constructed and operated needs to be radically re-thought to achieve the global ambition on net zero by 2050. We aim to achieve net zero greenhouse gas (GHG) emissions by 2040, including our own operations and emissions that result from the design of all of our projects.

199.70 MW Wind Project in Maharashtra by BWDPL | Pascall+Watson has invested in a new Verified Carbon Standard (VCS) in Indian windfarm project, to generate a clean form of electricity through renewable sources which will result in major carbon emission reductions each year.



INTRODUCTION

Pascall+Watson recognises that the built environment has a significant impact on the climate and the natural world.

We are committed to improving the sustainability of the built environment and achieving the global goal of Net Zero Carbon by 2050.

This policy sets out Pascall+Watson's approach to sustainability, outlining sustainability goals and improvement strategies that are specific to our company and area of expertise.

THE COMPANY

COMPANY

We are committed to operate as a certified Carbon Neutral company and progressively reducing our emissions year on year, with an aim to be fully Net Zero without the need for offsetting by 2040.

PARTNERS

We look to collaborate with clients, contractors and consultants that share our sustainability values. We seek to work with partners that are similarly committed to delivering net-zero projects, services and goals.

PEOPLE

We will nurture an inclusive working environment of innovation and collective learning with well-being at its heart.

TRANSPARENCY

We will be accountable for how we operate and what we design; recording and sharing our learning and progress for the benefit of continual improvement.

THE PRACTICE

DESIGN

Environmental responsibility and sustainability is at the core of our design processes. We strive to deliver design with net-zero solutions.

CONSTRUCTION

Champion Modern Methods of Construction that utilise circular economy methodologies, support resource and energy efficiency, promote ecology, whilst mitigating waste, reducing embodied carbon, and adopting water management processes.

SOCIAL

Create spaces that are socially responsive, providing healthier more engaging environments that improve the lives of both end users and local communities.

INNOVATION

We look to pioneer innovative sustainability approaches and design methodologies for the benefit of all project outcomes.

OUR SUSTAINABILITY STRATEGIES

Pascall+Watson will implement this **Sustainability Policy** through two distinctive strategy documents.

Our **Company Strategy** outlines how Pascall+Watson will operate as a sustainable business, and our **Practice Strategy** describes how we will implement sustainability into all of the practice's projects.

Both strategies will be regularly reviewed and updated in conjunction with our implementation of sustainability across the business.





IBERS

Aberystwyth University | The award-winning low energy design reflects the pioneering scientific research undertaken by the Institute

Civic Trust Awards 2013, Commendation

S-Lab Awards 2013, New Laboratory, Finalist

Constructing Excellence in Wales Awards 2012, Low/Zero Carbon, Finalist

BRE Sustainability Awards 2011, Best BREEAM 'Excellent', Winner

Project Process

Carbon assessments, measurements and reduction opportunities are completed at all design stages on projects as part of our company design processes. These outputs form part of the core deliverables for projects to ensure alignment with company sustainability goals and client expectations.

Fundamental to Pascall+Watson's approach to design process is our Quality and Environmental Management System and Project Quality Plans. As part of our peer review and project assessment process, projects review embodied carbon and demonstrate alignment with design guides and best practice.

Project data is logged and reviewed in order to understand overall company performance.

Responsibility

Adherence to this policy, and associated documents is the responsibility of all employees at all levels of the company. Employees will engage in activities in line with our collective sustainability strategy and all goals established in the policy.

Target Setting, Monitoring & Recording

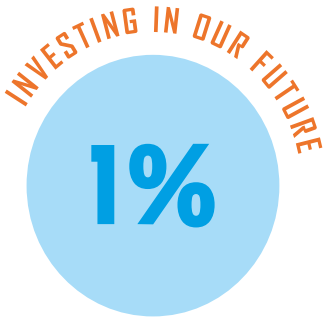
Pascall+Watson has set a target to reduce emissions by 46% by 2030 against a 2019 baseline year, equating to a circa 4% reduction annually.

We report company scope 1, 2 and 3 emissions in line with the **Greenhouse Gas Protocol** on an annual basis and disclose progress against forecasted reduction targets.

Emissions data is collected internally on a quarterly basis and is available to all staff as a dashboard of the company's performance, allowing unsatisfactorily performing areas to be targeted for improvement.

Pascall+Watson's own targets align with both legally binding targets set by HM UK Government as well as those targets outlined in the RIBA 2030 Challenge

All of Pascall+Watson's company emissions data is reported in line with PAS2060 carbon neutral operations requirements, with our processes peer reviewed by an external specialist and reporting methods accredited by SBTi or equivalent.



Research, Innovation & Training

Pascall+Watson focuses on delivering innovation and industry-leading architectural services associated with the company's sectors.

This is implemented by ensuring a high level of knowledge and the correct tools are accessible to all staff through education and training practices.

Pascall+Watson places emphasis on recruiting and continually nurturing staff with a working knowledge of sustainability and constantly exploring ways it can be applied to the relevant sectors. Accelerating our journey in delivering sustainable and Net Zero carbon projects.

Completed projects are assessed against pre-determined targets, forming a library of benchmark projects across our engaged sectors at all stages. This benefits upcoming and ongoing projects; enabling them to learn and develop from the completed projects. Project reporting will be in accordance with RICS' Life-Cycle Costing requirements.

Pascall+Watson seeks to work with clients and sub-consultants who actively measure and reduce their carbon impacts, with the goal of decarbonising the company's supply chain.

We are committed to investing at least 1% of income into our sustainability agenda; education, research, development and employees.





Pascall+Watson are proud to be preserving and enhancing UK biodiversity. Our carbon emissions have been balanced out by funding an equivalent amount of carbon savings through Verified Carbon Standard UK and global projects. One of these projects is by supporting the Carbon Footprint Tree Planting Programme in the UK. All our planting will predominantly be in school grounds, reserves and managed woodland where they will live their natural lifespan and meet their biodiversity targets.

Environmental Standards & Quality Control

Pascall+Watson operates an **Environmental Management System** which complies with the requirements of **ISO 14001:2015***

Through our designs and specifications, we are committed to the following:

- Continually strive to improve our environmental management of the projects with which we are engaged.
- To include and work to all statutory legislation and design guides with respect to environmental considerations.
- Within our quality procedures, to operate good practice in respect of the use of resources and the avoidance of pollutants and waste.
- To maintain **Continued Professional Development** within the practice, to ensure awareness of changing environmental attitudes and legislation.
- To ensure that environmental considerations are part of the responsibilities of individual designers employed by the company.
- Carbon reporting for individual projects will be based on a whole life carbon assessment covering modules A-C of the **RICS Whole Life Carbon Assessment for the Built Environment**, using externally verified carbon intensity data.

*Scope of Pascall+Watson for ISO14001:2015

Architectural Practice with expertise in Architectural Design and Delivery, Design and Project Management, Masterplanning, Interior Design, Wayfinding, BIM, Sustainability and 3D Visuals.

The SBTi have verified our net-zero science-based target by 2040 and approved our near and long-term science-based emissions reduction targets making us one of a handful of architecture practices to receive this formal approval.

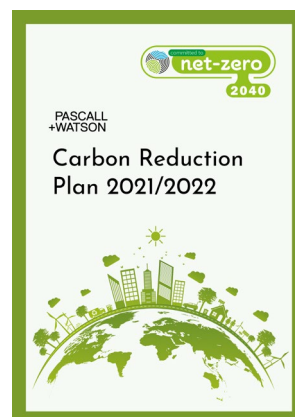
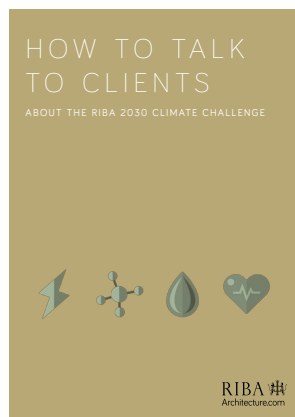
We are already signatories of the RIBA Climate Challenge initiative and are forecasted to deliver the emission reductions identified of this in advance of both the 2025 (interim measures) and the 2030 dates.

Pascall+Watson have also produced a Carbon Reduction Plan to comply with the requirements of the UK Government's Procurement Policy Note 06/21.

Our calculations and process are externally validated by Cundall, to give us impartial assessment and guidance as a company, as well as credibility in our reporting. Where carbon offsetting is necessary, we offset with Gold Standard Verified offsetting providers.

We support the United Nations Sustainable Development Goals (SDGs), which are a universal call to action to end poverty, protect the planet and ensure all people enjoy peace and prosperity

Pascall+Watson has influence over 11 relevant UN SDGs for our sustainability focused activities and the core goals that RIBA has identified as best matching construction industry.



SUSTAINABLE DEVELOPMENT GOALS

Our contribution to the UN SDGs

We support the United Nations Sustainable Development Goals (SDGs), which are a universal call to action to end poverty, protect the planet and ensure all people enjoy peace and prosperity.

Relevant UN SDGs for our sustainability focused activities and the core goals that RIBA has identified as best matching construction industry.



PASCALL +WATSON

London

The Warehouses
10 Black Friars Lane
London
EC4V 6ER
T +44 (0)20 3837 2500

Abu Dhabi

Cloud Spaces Suite 106
Town Square Level 1
Yas Mall, Yas Island
PO Box 93834
Abu Dhabi
United Arab Emirates
T +971 (0)2 410 3543
info@pascalls.ae

Ireland

149 Francis Street
Dublin 8
Ireland
T +353 (0)1 473 4625

11 Mallow Street
Limerick
V94 WRN4
Ireland
T +353 (0)61 310 890

Our Services

Architecture
Interior Design
Wayfinding Design
Product Design
Design Management
Masterplanning
Retail Planning
Passenger Simulation
Modelling
Building Information
Modelling (BIM)
3D Visualisation

Sectors

Commercial
Residential
Retail
Transportation Infrastructure
Education
Leisure
Hospitality